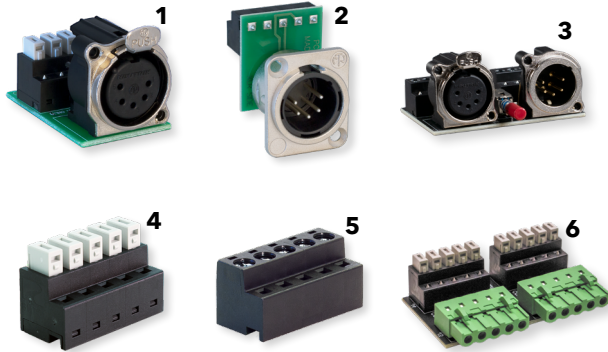


# CONNECTORS



Models shown: 1. PWCON XLR5BF IDC5 Q4  
2. PWCON XLR5DM CSC5 Q4  
3. PWCON XLR5MF CSC5 Q1  
4. PWCON SPARE IDC5 Q4  
5. PWCON SPARE CSC5 Q4  
6. PWCON PH5 IDC5 Q1

## WARRANTY

3-year limited warranty. Complete warranty terms located at:  
<https://www.acuitybrands.com/support/warranty>

## NOTE

Actual performance may differ as a result of end-user environment and application. Specifications subject to change without notice.

## ORDERING INFORMATION

PWCON			EXAMPLE: PWCON XLR5BF IDC5 Q4		
Series	Connector Type		Rear Connector Type	Quantity	
PWCON Pathway Data Receptacle Connectors	XLR5BF <sup>1,2</sup>	XLR 5-Pin Female "B" Type	CSC5 <sup>6</sup>	5-Pin Compression Screw Connector	Q1 Quantity 1
	XLR5BM <sup>1,2</sup>	XLR 5-Pin Male "B" Type	CSC6 <sup>7</sup>	6-Pin Compression Screw Connector	Q2 Quantity 2
	XLR5DF <sup>1,2</sup>	XLR 5-Pin Female "D" Type	CSC3 <sup>6</sup>	3-Pin Compression Screw Connector	Q4 Quantity 4
	XLR5DM <sup>1,2</sup>	XLR 5-Pin Male "D" Type	IDC5 <sup>6</sup>	5-Pin Insulation Displacement Contact Connector	
	XLR3BF <sup>1,2</sup>	XLR 3-Pin Female "B" Type	IDC6 <sup>7</sup>	6-Pin Insulation Displacement Contact Connector	
	XLR3BM <sup>1,2</sup>	XLR 3-Pin Male "B" Type	IDC3 <sup>6</sup>	3-Pin Insulation Displacement Contact Connector	
	XLR4BF <sup>1,2</sup>	XLR 4-Pin Female "B" Type			
	XLR4BM <sup>1,2</sup>	XLR 4-Pin Male "B" Type			
	XLR5MF <sup>3,4</sup>	XLR 5-Pin Male and XLR 5-Pin Female Pass Thru			
	PH5 <sup>1,4</sup>	Dual 5-Pin Phoenix to Dual Compression or IDC adapter			
	SPARE <sup>5</sup>	Spare Compression Screw or IDC connector			

## Notes

1. XLR Connectors and PH5 Phoenix adapters must be paired with either CSC5 or IDC5 Rear Connectors only, except XLR5MF; see note 3.
2. XLR Connectors available in Q4 quantity only, except XLR5MF; see note 4.
3. XLR5MF available with CSC5 only.
4. XLR5MF and PH5 Connectors available in Q1 quantity only.
5. SPARE connectors are simply spare/extra compression screw or IDC connector blocks; as such they have no "rear" connector, however use column 3 to choose the number of pins needed.
6. CSC5, IDC5, CSC3, and IDC3 SPARE connectors available in Q4 quantity only.
7. CSC6 and IDC6 SPARE connectors available in Q2 quantity only.

## OVERVIEW

Connector-only data receptacles that ship from stock.

Available in three, four, or five-pin XLR connectors, in both male or female; with both Neutrik® B and D series connector options and compression screw or insulation displacement contact (IDC) rear connections.

When using stranded installation wiring, use the compression screw connectors; when using solid-core Category wiring, use IDC for faster installation and more reliable connections without fear of damaging the wire.

Also available are individual spare compression-screw and IDC terminal connectors in 3, 5 and 6 pin sizes, as well as Phoenix terminal to IDC or compression screw adapters for rack-mount DMX Repeaters and Pathport Gateways.

## FEATURES

- XLR connectors feature rugged, Neutrik connectors
  - "B" Type: Same high-quality connectors as our Data Receptacle Inserts (PWINS) and Rack-mount DMX/RDM Gateways and DMX Repeaters (PWPP RM and PWREP RM). Metal mounting flange with continuous ground contact for best EMC practice
  - "D" Type: Metal shell surrounding the entire connector offers RF protection. UL recognized component
- 5-pin XLR and Phoenix adapter connectors available, to mate up a pair of connectors on rack-mount Pathport Gateways or DMX Repeaters to removeable compression-screw or insulation-displacement contact (IDC) connectors, no soldering required
- 5-pin XLR Male & Female Pass Thru available, with "Bypass/Thru" button and rear compression screw connectors
- 3 and 4-pin XLR connectors available with rear compression screw connectors
- 3, 5 and 6-pin compression screw and IDC terminal connectors available as spares

## SPECIFICATIONS

### Mechanical

<b>Dimensions</b>	<b>PWCON XLR[x]BF [CSC5/IDC5]</b>	1.04" W x 1.22" H x 1.55" D (26mm W x 31mm H x 39mm D)
	<b>PWCON XLR[x]BM [CSC5/IDC5]</b>	1.04" W x 1.05" H x 1.55" D (26mm W x 27mm H x 39mm D)
	<b>PWCON XLR5DF CSC5</b>	1.02" W x 1.5" H x 1.64" D (26mm W x 38mm H x 42mm D)
	<b>PWCON XLR5DF IDC5 [with IDC connector closed]</b>	1.02" W x 1.5" H x 1.68" D (26mm W x 38mm H x 43mm D)
	<b>PWCON XLR5DM CSC5</b>	1.02" W x 1.5" H x 1.44" D (26mm W x 38mm H x 37mm D)
	<b>PWCON XLR5DM IDC5 [with IDC connector closed]</b>	1.02" W x 1.5" H x 1.48" D (26mm W x 38mm H x 38mm D)
	<b>PWCON XLR5MF CSC5</b>	2.42" W x 1.22" H x 1.87" D (61.5mm W x 31mm H x 47.5mm D)
	<b>PWCON PH5 CSC5</b>	2.45" W x 0.55" H x 1.59" D (62mm W x 14mm H x 40.4mm D)
	<b>PWCON PH5 IDC5 [with IDC connector closed]</b>	2.45" W x 0.58" H x 1.59" D (62mm W x 14.7mm H x 40.4mm D)
	<b>PWCON SPARE CSC5</b>	1" W x 0.49" H x 0.485" D (25.5mm W x 12.5mm H x 12mm D)
	<b>PWCON SPARE CSC3</b>	0.605" W x 0.49" H x 0.485" D (15.4mm W x 12.5mm H x 12mm D)
	<b>PWCON SPARE CSC6</b>	1.195" W x 0.49" H x 0.485" D (30.3mm W x 12.5mm H x 12mm D)
	<b>PWCON SPARE IDC5 [with IDC connector closed]</b>	1" W x 0.52" H x 0.485" D (25.5mm W x 13.2mm H x 12mm D)
	<b>PWCON SPARE IDC3 [with IDC connector closed]</b>	0.61" W x 0.52" H x 0.485" D (15.5mm W x 13.2mm H x 12mm D)
	<b>PWCON SPARE IDC6 [with IDC connector closed]</b>	1.2" W x 0.52" H x 0.485" D (30mm W x 13.2mm H x 12mm D)

<b>Weight</b>	<b>PWCON XLR[x]BF CSC5</b>	0.70 oz (20 g)
	<b>PWCON XLR[x]BF IDC5</b>	0.63 oz (18 g)
	<b>PWCON XLR[x]BM CSC5</b>	0.56 oz (16 g)
	<b>PWCON XLR[x]BM IDC5</b>	0.49 oz (14 g)
	<b>PWCON XLR5DF CSC5</b>	1.20 oz (34 g)
	<b>PWCON XLR5DF IDC5</b>	1.13 oz (32 g)
	<b>PWCON XLR5DM CSC5</b>	1.06 oz (30 g)
	<b>PWCON XLR5DM IDC5</b>	0.99 oz (28 g)
	<b>PWCON XLR5MF CSC5</b>	1.41 oz (40 g)
	<b>PWCON PH5 CSC5</b>	0.92 oz (26 g)
	<b>PWCON PH5 IDC5</b>	0.78 oz (22 g)
	<b>PWCON SPARE CSC5</b>	0.21 oz (6 g)
	<b>PWCON SPARE CSC3</b>	0.14 oz (4 g)
	<b>PWCON SPARE CSC6</b>	0.21 oz (6 g)
	<b>PWCON SPARE IDC5</b>	0.14 oz (4 g)
	<b>PWCON SPARE IDC3</b>	0.07 oz (2 g)
	<b>PWCON SPARE IDC6</b>	0.14 oz (4 g)

## WIRING

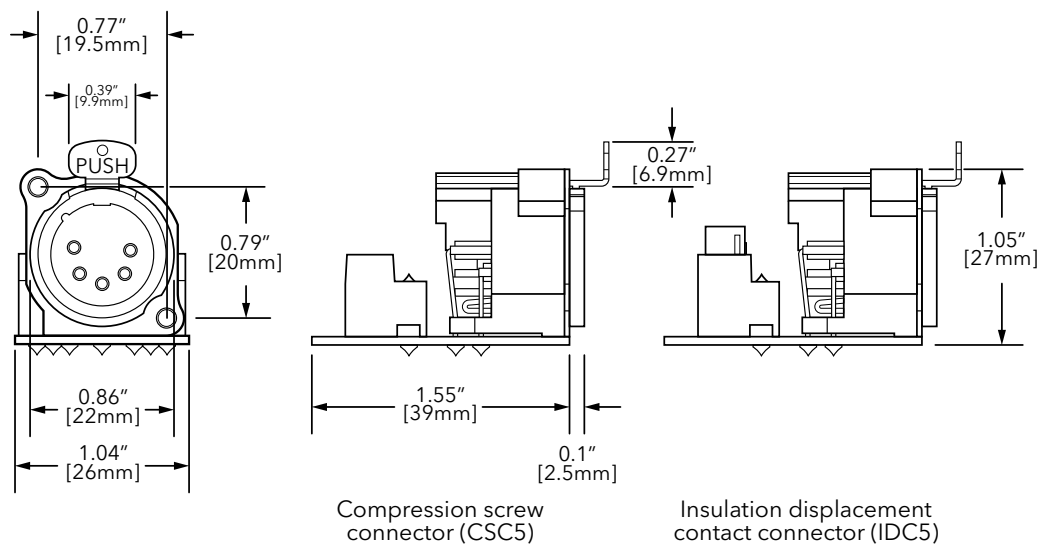
DMX512 / RDM PINOUT		
Purpose	XLR / Terminal Block Pin #	RJ45 PIN # and Wire Color
Shield / Common	1	7 - White / Brown
Data - (complement)	2	2 - Orange
Data + (true)	3	1 - White / Orange
Not Used	4	6 - Green
Not Used	5	3 - White / Green
Not Used - Do Not Connect	N/A	4 - Blue
Not Used - Do Not Connect	N/A	5 - White / Blue
Not Used - Do Not Connect	N/A	8 - Brown

## DIMENSIONS

### PWCON XLR[x]BF [CSC5/IDC5]

**Note:**

Dimensions for 4- and 3-pin versions are identical.

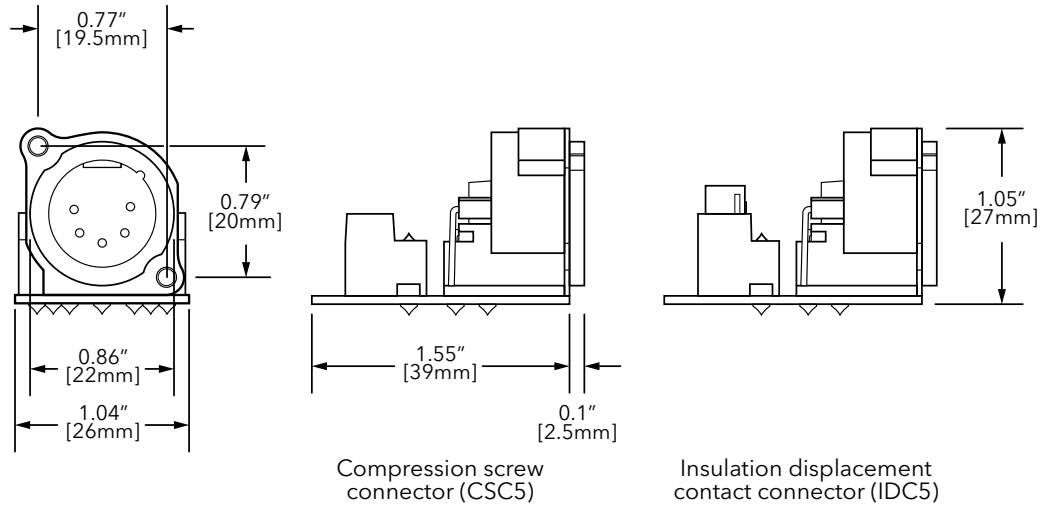


## DIMENSIONS

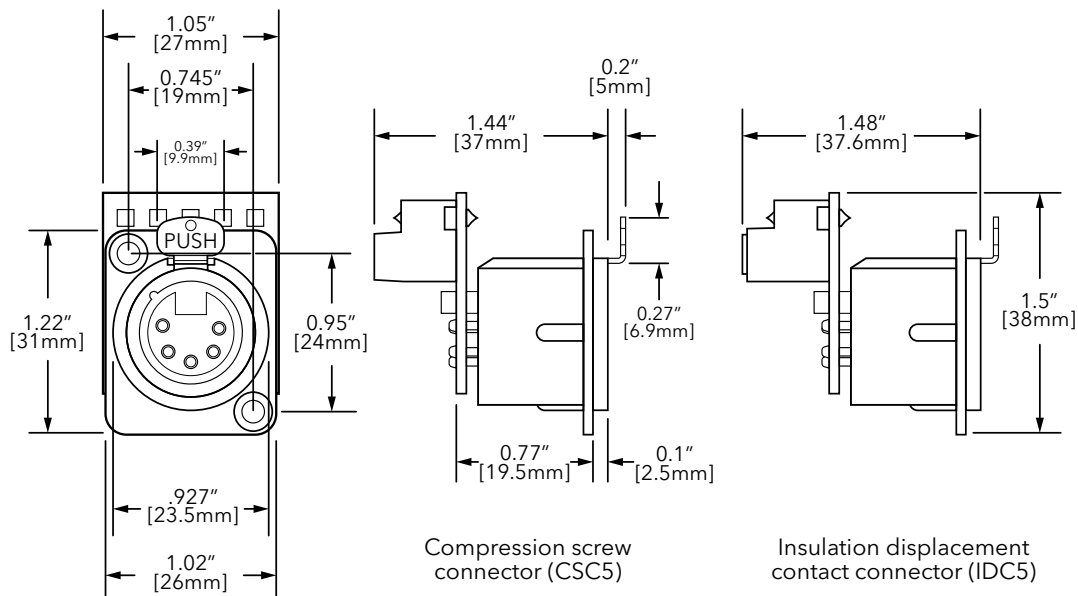
### PWCON XLR[x]BM [CSC5/IDC5]

**Note:**

Dimensions for 4- and 3-pin versions are identical.

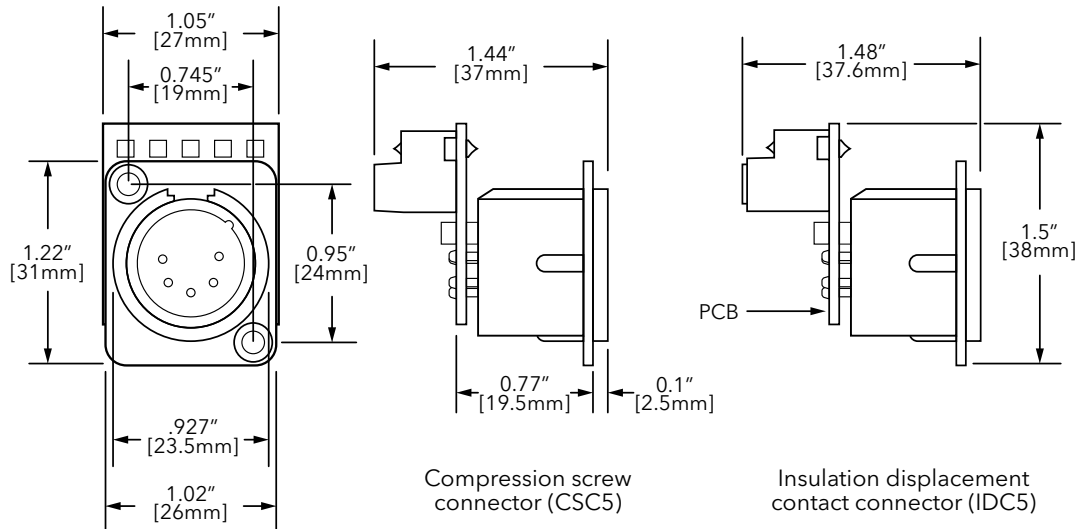


### PWCON XLR5DF [CSC5/IDC5]

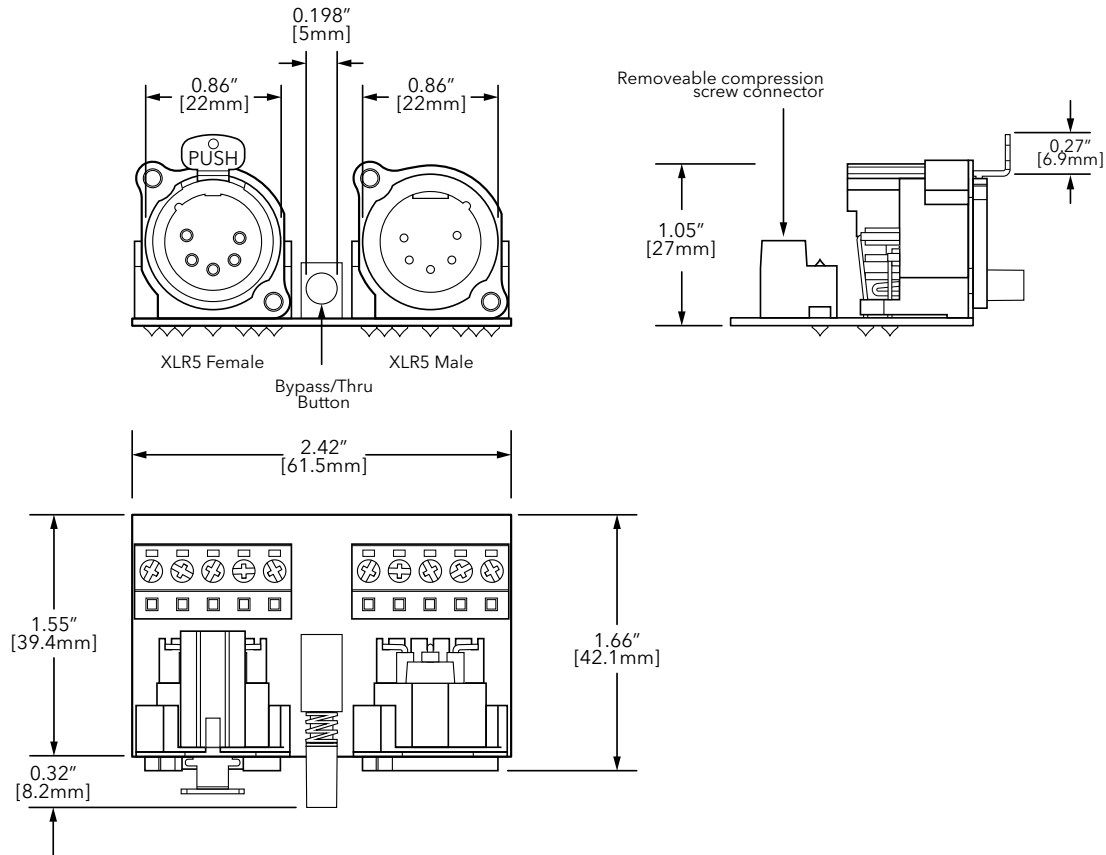


## DIMENSIONS

### PWCON XLR5DM [CSC5/IDC5]

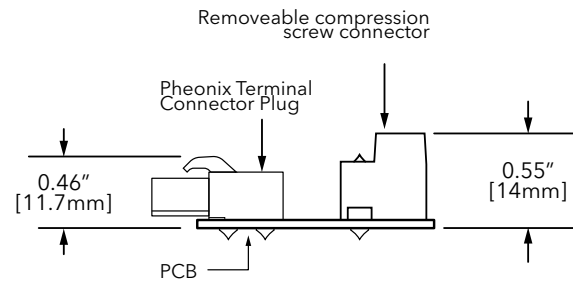
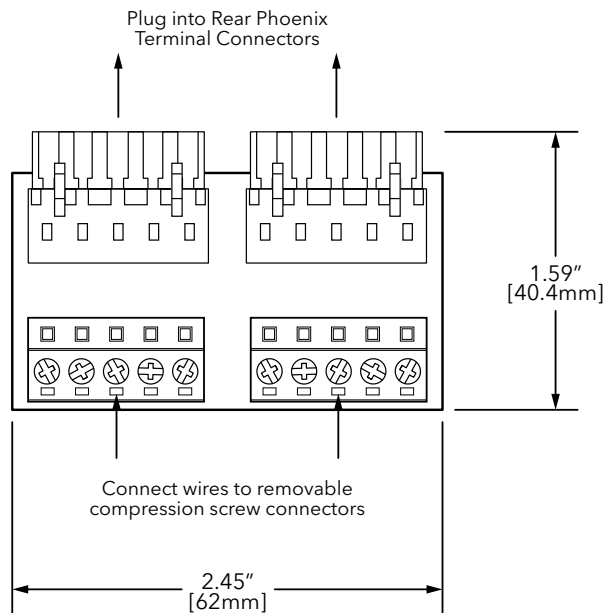


### PWCON XLR5MF CSC5



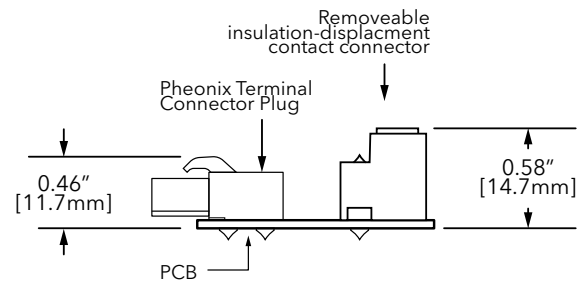
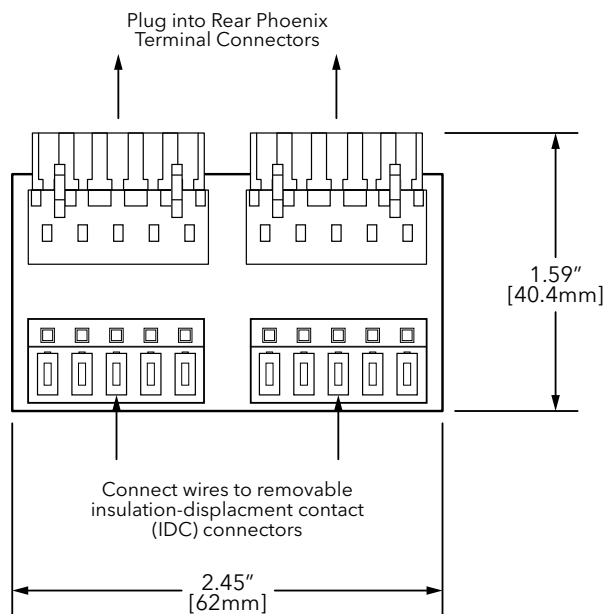
## DIMENSIONS

### PWCON PH5 CSC5



SIDE VIEW

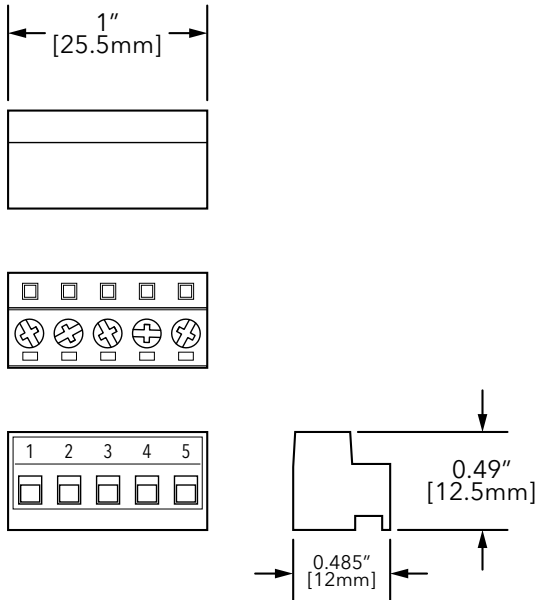
### PWCON PH5 IDC5



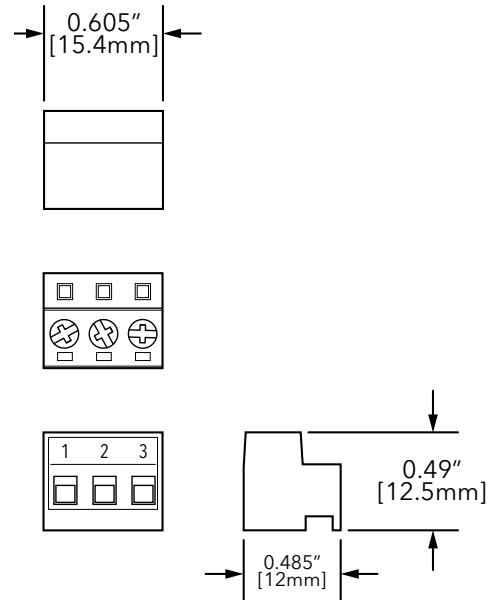
SIDE VIEW

## DIMENSIONS

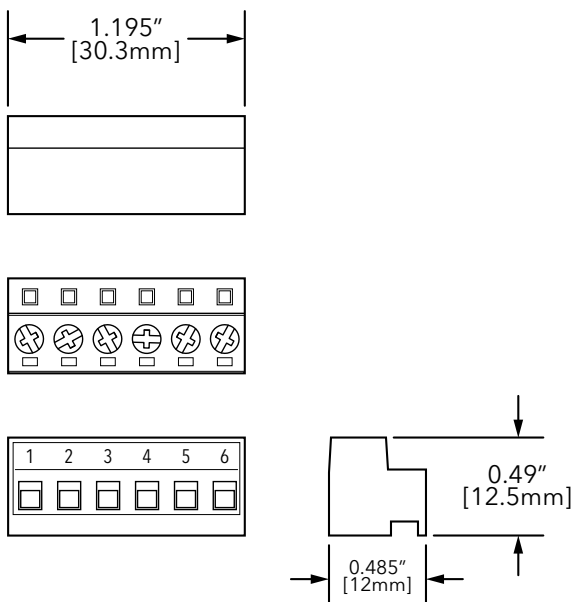
### PWCON SPARE CSC5



### PWCON SPARE CSC3

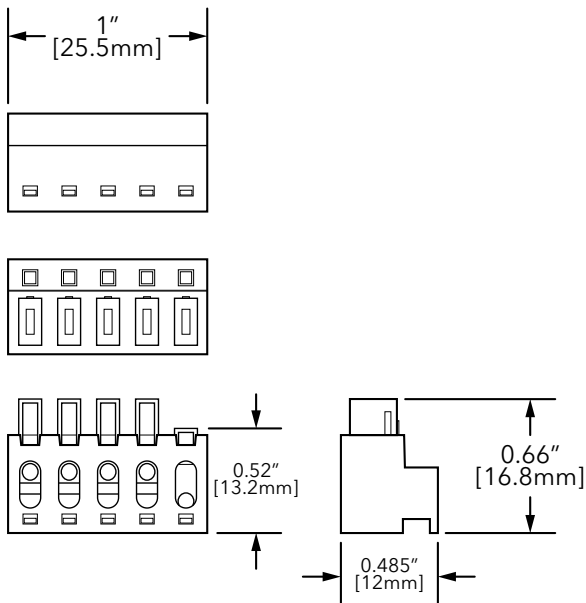


### PWCON SPARE CSC6

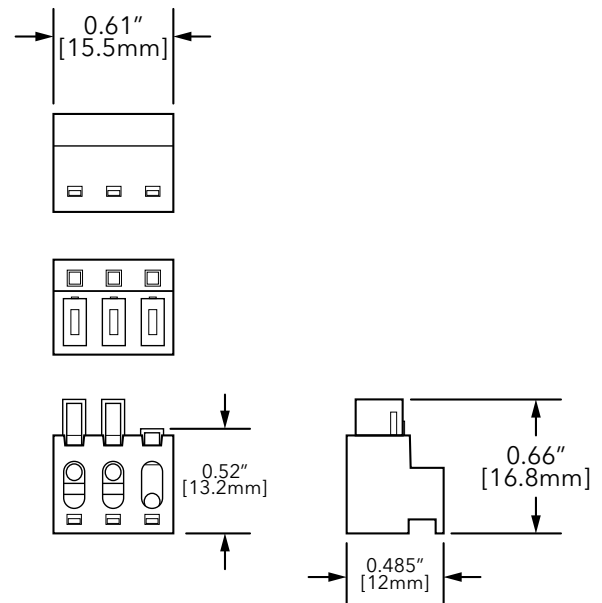


## DIMENSIONS

### PWCON SPARE IDC5



### PWCON SPARE IDC3



### PWCON SPARE IDC6

